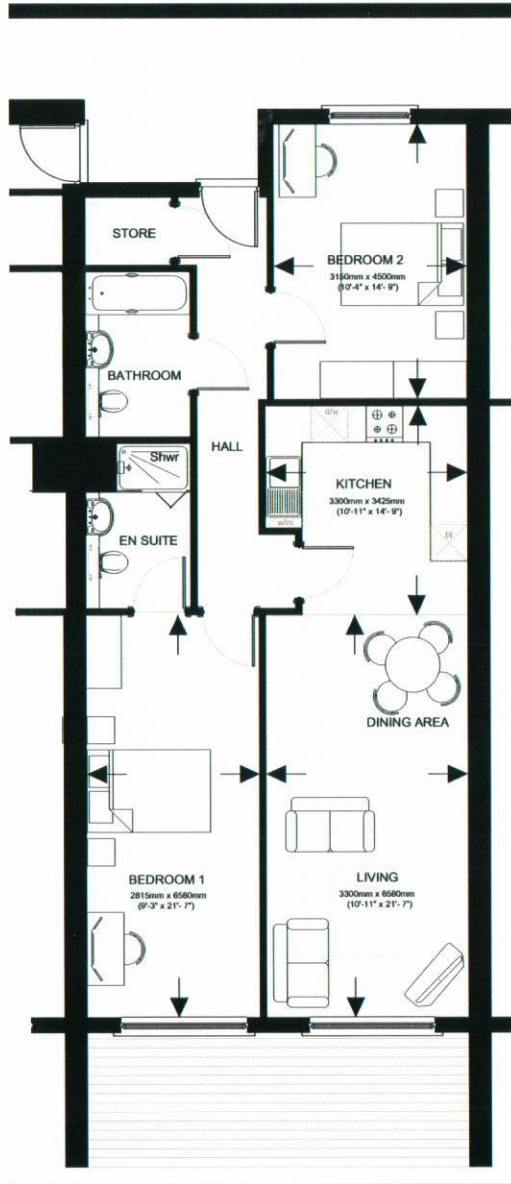


# APARTMENT 2



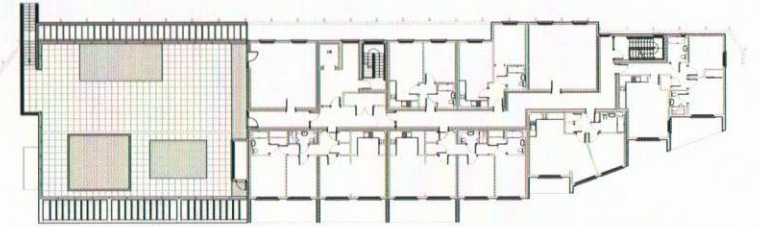
- Kitchen:**  
3.30m x 3.43m (10'11" x 14'9")
- Living/Dining Area:**  
3.30m x 6.58m (10'11" x 21'7")
- Bedroom 1:**  
2.82m x 6.58m (9'3" x 21'7")
- Bedroom 2:**  
3.15m x 4.50m (10'4" x 14'9")

Apartment total square footage:  
954 sq ft

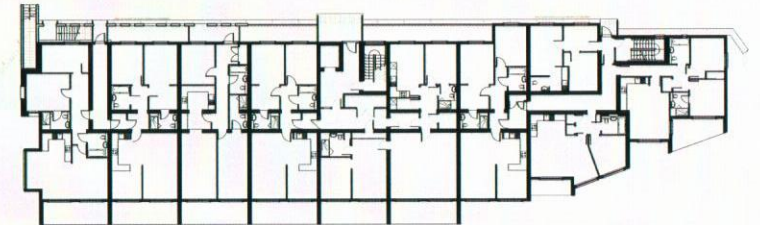
## SITE PLAN



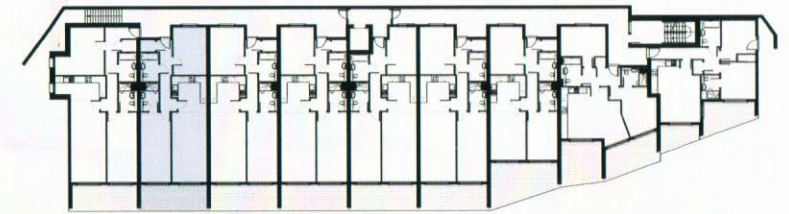
### First Floor



### Ground Floor



### Garden Terrace Level



2



THATCHER VIEW AT LINCOMBE MANOR  
MIDDLE LINCOMBE ROAD, TORQUAY, DEVON TQ1 2AF  
t. 01803 389 859  
w. [thatcherview.co.uk](http://thatcherview.co.uk)

Please note: The text, dimensions, photographs, artists' impressions and computer generated images are indicative and intended as a guide only. The developer reserves the right, at any time, to change the layout, specification, elevations and landscaping. These details are intended for general information and do not constitute any part of a contract. It should not be assumed that any contents/furnishings/furniture etc photographed or illustrated are included in any sale. We endeavour to improve upon our development and therefore some aspects may have changed since printing these details (June 2015).